

TrackFlow – Advanced Tracking System

Ground Transportation Management System (GTMS)



KEY FEATURES:

- Track Ground Transportation vehicles per class type
- Area specific reports and event logs
- Automatic vehicle dispatching mechanism
- Dwell time reporting and trip counts
- Overstay / Understay alerts
- Combined credential's management per use
- E-mail notifications and alerts
- Customizable / Downloadable Data View
- Soft, Hard, and Timed Anti-Passback
- Threshold schedules at glance
- Multiple IP Camera Feed Streams
- Data Integration Support

TrackFlow, the advanced Ground Transportation Management System, powered by ©ArmID, is the **premier tracking software solution** for TagMaster North America's RFID and LPR platforms, as well as any third-party Wiegand proximity reader. This software solution offers enhanced features such as zoning, dispatching, multiple reader support, a new-and-improved web interface, sync-enabled whitelisting, streamlined groups and access profiles, multiple anti-passback settings, with custom data view and export capabilities to suit the unique specifications of each application. TrackFlow is the perfect solution to accurately monitor, control, and optimize the curbside use of the commercial vehicles at airports.

Gain Control of Your Curbside Traffic Flow

Combined with networked RFID readers and/or LPR cameras from TagMaster NA and the option of a Wiegand proximity readers - TrackFlow offers cutting-edge technology that allows you to dynamically manage the curbside flow of the commercial vehicles, identify vehicles by class type, set peak and lull times, log trip and dwell times, and control anti-passback options to increase security.

Simple and Efficient Facility and Access Management Tools

TrackFlow provides an easy-to-use web interface that allows:

- Users to monitor recent events, devices health, and system stats
- Define user permissions, area segmentation, and live stream cameras
- Manage credentials, user groups, whitelist, BOLO (Be On Look Out) list, and the fleet of vehicles.

Customizable Schedules & Data View

The all-new web interface allows for easy facility access scheduling. Users may set multiple schedules for each credential or group and export the customizable data view of Access Events, Analytics, Credentials, and Location.

Automated Dispatching

TrackFlow keeps a steady stream of vehicles heading to a commercial area by automatically dispatching the required number of vehicles. Drivers are automatically queued up and notified by email when it is their turn.

Registration

Optimize time and resources by allowing users registering themselves via the web portal. Users can input their credentials, personnel data, vehicle details, and upload documents such as driver's licenses, registration, and proof of insurance.

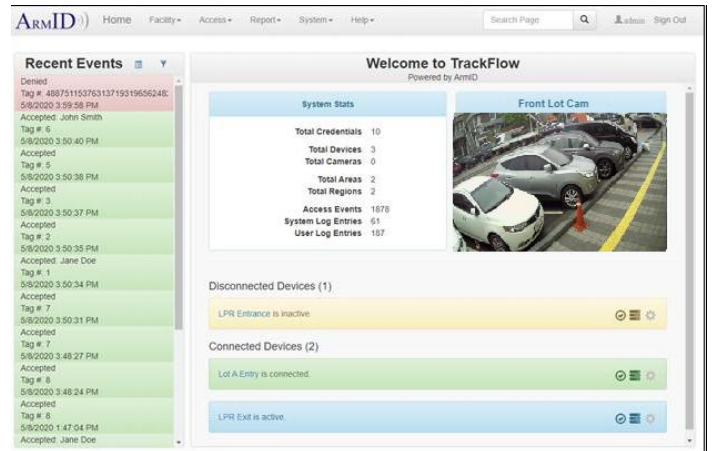
ACTS Software is ©ArmID, Inc. and used under license. Any unauthorized use, copy, reproduction, or distribution of this software is strictly prohibited

TrackFlow - The TagMaster Solution for Ground Transportation

Give your curbside customers a first-class experience.

Powerful Facility Management tools

- User friendly web interface
- Create Users and Groups, assign Permissions, manage multiple Companies, and define Zones (Area, Regions, and Devices)
- Manage While List, BOLO List, and define Access Filters
- Setup peak and lull times, and enforce compliance of curbside flow
- Keep track of vehicle's usage – trip and dwell times
- Assign multiple credentials to a company at once. Edit any of the credentials details or add new credentials in the same page
- Enable multiple live webcam feed with customizable view for single or multiple images
- View and export key data information - Events, Durations, Credentials, Vehicles, and System logs
- On demand or scheduled Database backup and restore



The registration form is titled 'Registration' and is divided into two main sections: 'Personal Information' and 'Vehicle Information'. The 'Personal Information' section includes fields for 'Serial Number' (marked as required), 'First Name' (required), 'Last Name' (required), 'Email' (required), 'Phone', and 'Address'. The 'Vehicle Information' section includes a note 'Only alphanumeric characters are allowed in the license plate.' and a 'License Plate' field (required) with a dropdown menu currently set to 'AL'.

Registration

End User data entry

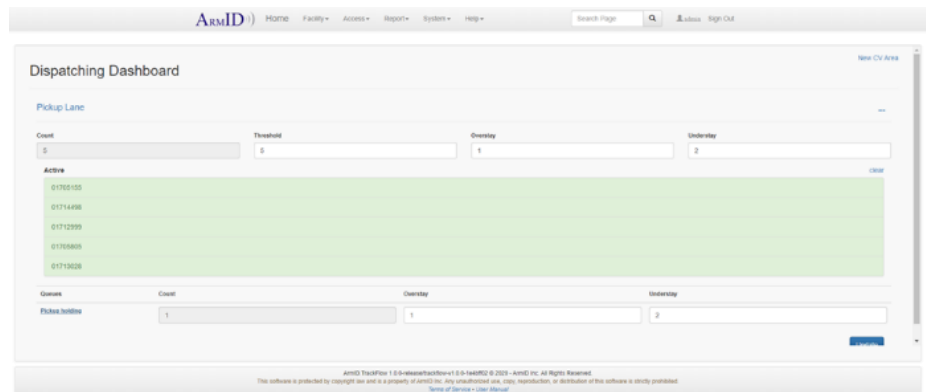
- Save time entering user information by having users register their information themselves.
- Users input their credential, personnel, and vehicle details

Support Multiple Portals

- Portals by groups
- Portals by company
- Portals by access privileges

Support File Upload

- Validate important documents such as driver's licenses, registration, and other important documents



Dispatching Dashboard

Automatic Dispatching

- Drivers are automatically queued up and email notified to proceed to the curbside upon specific demand

Customize

- Define specific threshold values per Area

Customize Overstay / Understay Alerts

- Alert notifications help to improve operation and compliance at the curbside and commercial areas

Schedules

- Automatically change the commercial area threshold at certain times of day or week, for busier or slower periods