

# LICENSE PLATE RECOGNITION



## About TagMaster NA

TagMaster NA is a leading provider of identification solutions, offering dual technologies including long-range Radio Frequency Identification (RFID) and License Plate Recognition (LPR). TagMaster NA addresses a wide range of challenges in the parking, access, and security industry with over 20 years of experience and technical knowledge.

The diverse family of LPR Cameras, RFID readers, and customized software solutions ensures TagMaster NA's AVI solutions offer maximum adaptability and versatility.

**TagMaster**

*North America, Inc.*  
[www.TagMasterNA.com](http://www.TagMasterNA.com)

## Why TagMaster NA LPR?

TagMaster NA has extensive knowledge of the challenges involved in creating a high-accuracy License Plate Recognition (LPR) solution. License plates come in all shapes, colors and sizes and need to be read in a variety of light and weather conditions. TagMaster NA's LPR cameras interface via TCP/IP or via Wiegand with a 3rd party access control solution.

TagMaster NA's range of high definition LPR cameras provides the best possible image quality and accuracy based on the advanced sensors and IR illumination. This results in quicker and more accurate license capture.

## Key Features

- One of the fastest and most accurate LPR engines and largest OCR libraries globally
- Fully functional web interface for simple, user-friendly operation
- Powerful on-board processing and OCR
- PoE+ Enabled
- Wiegand & TCP/IP interface for easy integration to 3rd party access control system
- High Resolution and Dual lens LPR cameras – Infrared & Color
- Varifocal lens & auto-focus
- Captures plates as close as 10 ft\* to 82 ft
- No external lighting needed
- Wi-Fi Capability for easy set up
- Software & Hardware trigger



## Which industry can we help you with?



Airports



Asset Tracking  
& Logistics



Gated  
Communities



Hospitality



Hospitals



Weigh  
Scale



Industrial



Mixed Use  
Parking



Municipalities



Rail



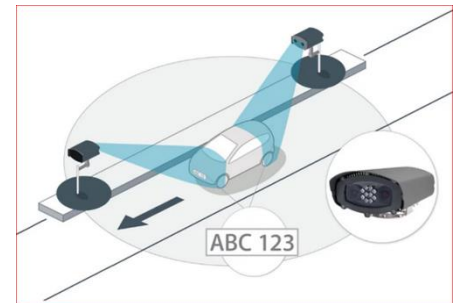
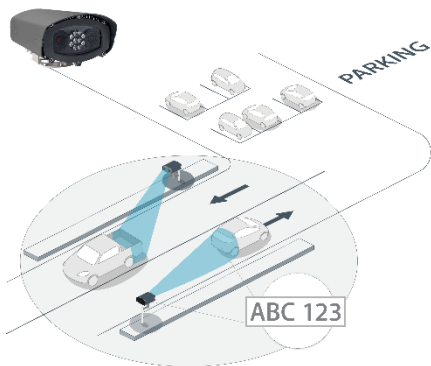
Universities



Car Wash

## Functionalities

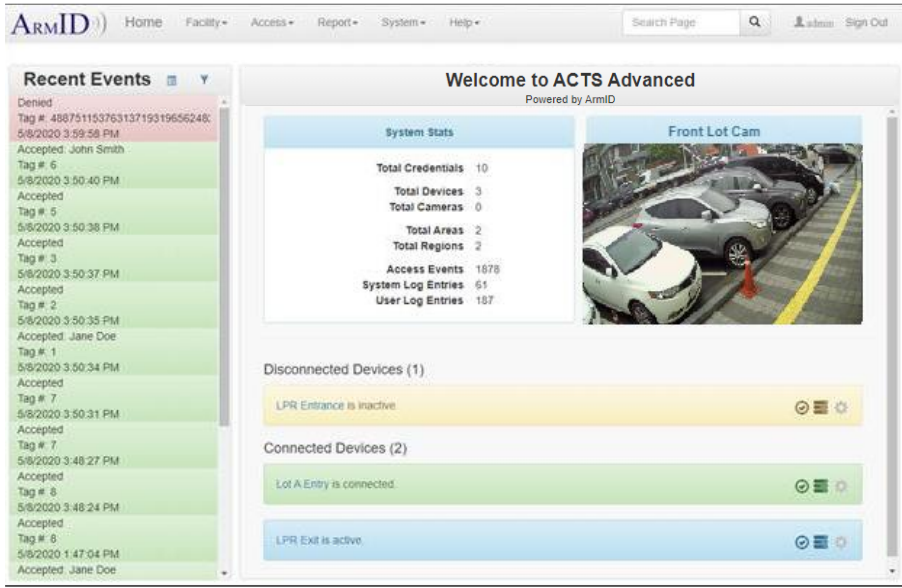
- Dynamic OCR with regularly updated License Plates
- Can Read Through Tinted/Bubble Plate Covers
- Reads Stacked Character Plates with High Accuracy
- Front and Rear Capture & options for simultaneous Front/Rear capture
- Proven in the most demanding and harsh environments
- Wide Lane Configuration



# ACTS Advanced

## Access Control Tracking System (ACTS) Advanced

Increases security, effectiveness, and access management control.



### KEY FEATURES:

- Manage Multiple Devices from a Single UI
- Ethernet, Wiegand, Serial (OSDP) interfaces
- Tiered User Permissions
- Zoning: Unlimited Regions within Areas
- Combined credential's management per use
- E-mail notifications and alerts
- Customizable / Downloadable Data View
- Reversible Lane Support
- Soft, Hard, and Timed Anti-Passback
- Mass Credential Importing / Exporting
- Multiple IP Camera Feed Streams
- Data Integration Support

**ACTS Advanced software**, powered by ©ArmID, is the **premier access control tracking software solution** for TagMaster North America's RFID and LPR platforms, as well any third-party Wiegand proximity reader. This software solution offers enhanced features such as zoning, multiple reader support, a new-and-improved web interface, sync-enabled whitelisting, streamlined groups and access profiles, multiple anti-passback settings, with custom data view and export capabilities to suit the unique specifications of each application. ACTS Advanced is the perfect solution for Gated Communities, Universities, Commercial and Residential Parking.

### Powerful Dashboard

