

# UHF - XT-Series



## About TagMaster NA

TagMaster NA is a leading provider of identification solutions, offering dual technologies including long-range Radio Frequency Identification (RFID) and License Plate Recognition (LPR). TagMaster NA addresses a wide range of challenges in the parking, access, and security industry with over 20 years of experience and technical knowledge.

The diverse family of LPR Cameras, RFID readers, and customized software solutions ensures TagMaster NA's AVI solutions offer maximum adaptability and versatility.

**TagMaster**

*North America, Inc.*  
[www.TagMasterNA.com](http://www.TagMasterNA.com)

# UHF - XT-Series

## Why TagMaster NA UHF XT-Series?

TagMaster's XT-Series RFID Readers operate on UHF frequencies and are full functionality readers with a read-range of 10 to 50 feet depending on reader and tag combination.

These readers allow for easy integration into new or existing access control systems and are EPC Gen 2 compliant.

TagMaster NA's UHF systems offer customizable tag options as well as programming based on project requirements.

## UHF Readers



*XT-5 Part No. 152900*

*XT-1 Part No. 152600*

### XT-5

TagMaster NA's XT-5 Reader supports multiple Wiegand formats, RS232, RS485 and TCP/IP integration. The XT-5 supports ACTS Software, Essential and Advanced.

The XT-5 Reader offers features such as port forwarding, PoE+, variable color LED read out, enhanced web interface security, and squelching for filtering out adjacent lanes or tags and preventing unwanted tag read.

Dimensions/ Weight: 11.8 x 11.8 x 2.4 in / 5.1 lbs.

### XT-1

TagMaster NA's XT-1 Reader supports 26-bit Wiegand, RS232 and RS485 integration. It's ideal for applications with an existing access control solution in demanding environments.

Dimensions/ Weight: 11.8 x 11.8 x 2.4 in / 5.1 lbs.

Which industry can we help you with?



Airports



Asset Tracking  
& Logistics



Gated  
Communities



Hospitality



Hospitals



Weigh  
Scale



Industrial



Mixed Use  
Parking



Municipalities



Rail



Universities



Car Wash

# UHF - Tags

## Passive Tags



Part No. NA1000/1025/1035



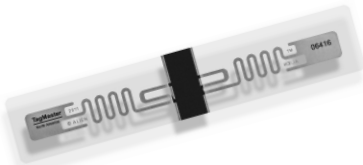
Part No. NA1100



Part No. NA1200



Part No. NA1300



Part No. NA1500



Part No. NA1800

### ISO Card

- Barcode and human-readable equivalent numbers
- Compatibility with preferred proximity 125KHz
- Customizable options for unique colors, logos, and designs

### Hang Tag

- Easily transferable
- Customizable options for unique colors, logos, and designs
- Barcode and human-readable equivalent numbers

### Heavy Duty Tag

- IP-69k rated durability for extreme weather conditions
- Can be mounted with double-sided adhesive or screwed on
- Reliable performance on metal and non-metal surfaces

### Windshield Sticker Tag

- Customizable options for unique colors, logos, and designs
- Tamper-proof and non-transferable
- Discreet form factor

### Headlight/Side View Mirror Tag

- Tamper-proof/non-transferable and discreet form factor
- Excellent use for high-end vehicles with metal coating in the windshield
- Weather resistant

### Extended Range Heavy Duty Tag

- IP-68 rated durability
- Extended read range up to 50 feet
- Ideal for applications in demanding and diverse environment

# SOFTWARE

## ACTS

### Access Control Tracking System

TagMaster NA UHF Software ACTS ESSENTIAL & ACTS ADVANCED

ACTS (Access Control Tracking Software) eliminate the need for external access control hardware or software. ACTS is TCP/IP enabled and can be remotely configured and accessed through any standard web browser.

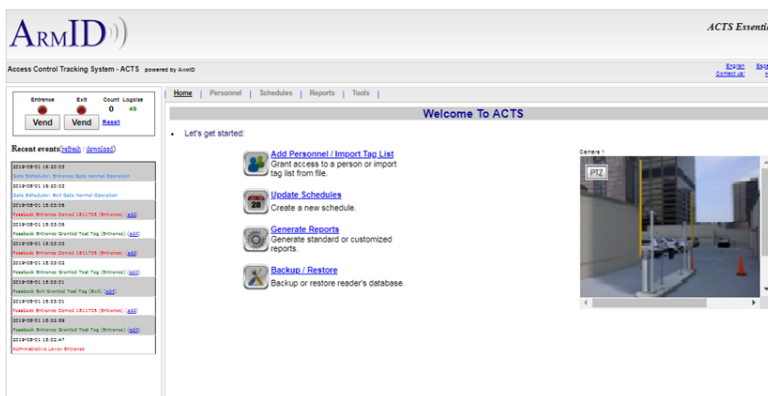
## Key Features

### ACTS Essential

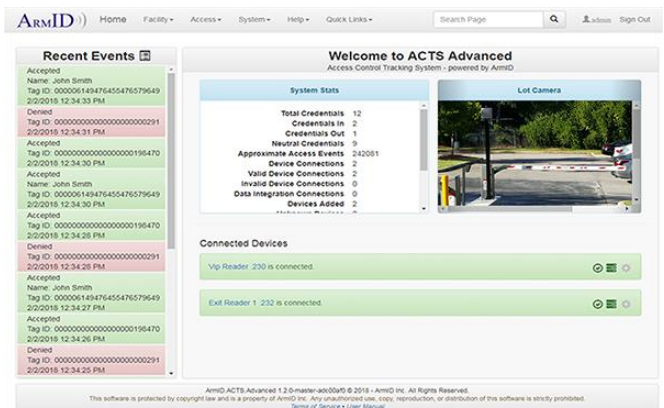
- No additional hardware or sever required
- Tag and Gate Scheduling and remote gate vending
- Manage up to 10,000 cardholders/credentials
- Supports IP based camera streaming

### ACTS Advanced

- Scalable to support multiple readers
- Unlimited areas, regions, and groups
- Customizable features and reports
- Whitelist, blacklist, and BOLO list



*Essential Software*



*Advanced Software*