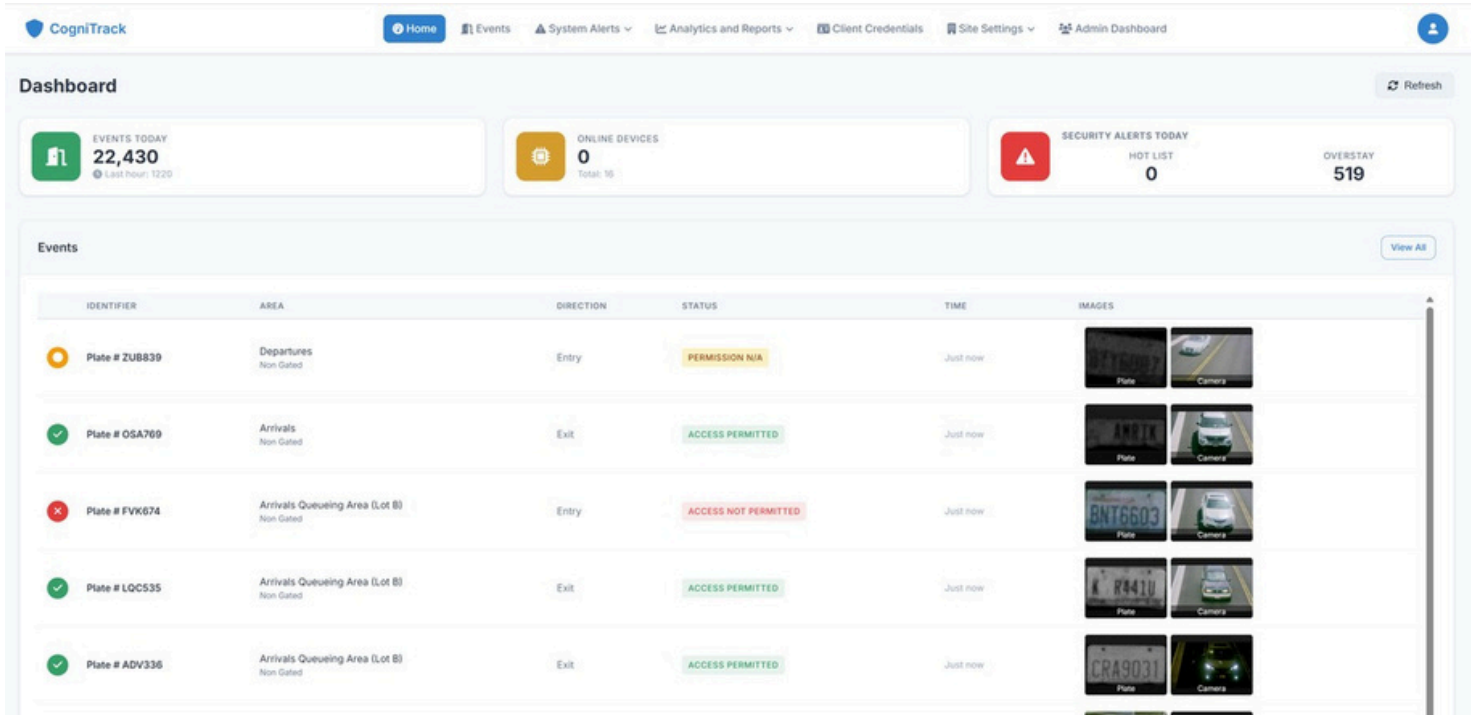


# CogniTrack

Real-Time Visibility. Intelligent Enforcement. Optimized Flow.



CogniTrack empowers airports and ground transportation operators with real-time operational visibility, automated policy enforcement, and intelligent traffic flow management to improve throughput, compliance, and revenue protection across all GTMS activities.

## Key Outcomes

- ✓ Reduce curbside congestion
- ✓ Improve dispatch efficiency
- ✓ Automate compliance enforcement
- ✓ Gain real-time operational visibility
- ✓ Protect transportation revenue



*\*CogniTrack is powered by ©ArmID, Inc. and used under license. Any unauthorized use, copy, reproduction, or distribution of this software is strictly prohibited\**

# CogniTrack

Real-Time Visibility. Intelligent Enforcement. Optimized Flow.

## Core Pillars



Real-Time Event Visibility

Real-time tracking of vehicle activity, curbside flow, and transportation operations.



Live Insights • Strategic Intelligence

Operational intelligence with real-time, near-real-time metrics, post event analytics, dashboards, and performance insights.



Real-Time Monitoring & Notifications

Automated notifications for compliance, overstay, hotlists, dispatching, and operational anomalies.



Clear Insights • Data Clarity

Generate actionable operational and compliance reporting across GTMS activities.

*\*CogniTrack is powered by @ArmID, Inc. and used under license. Any unauthorized use, copy, reproduction, or distribution of this software is strictly prohibited\**

# CogniTrack

Real-Time Visibility. Intelligent Enforcement. Optimized Flow.

## Key Features

Powered by specialized intelligent agents and rule-based automation that work together to manage every aspect of ground transportation operations.

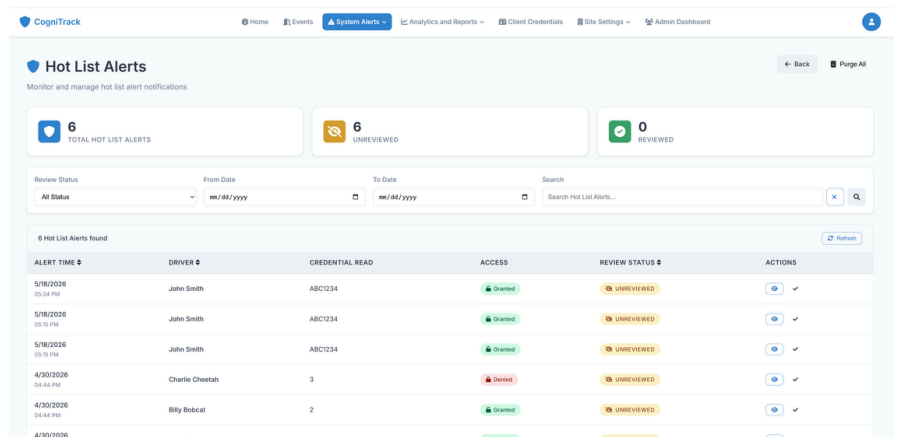
### Live Events & Flow Monitoring, and Identity Resolution

- Real Time Metrics
- Real Time Security Alerts
- Live Vehicle Events
- Device Status

### System Alert Agents

Automated monitoring for:

- compliance
- overstay
- dispatching
- operational anomalies



The screenshot shows the CogniTrack 'Hot List Alerts' dashboard. At the top, there are navigation links for Home, Events, System Alerts, Analytics and Reports, Client Credentials, Site Settings, and Admin Dashboard. The main section displays 'Hot List Alerts' with a sub-header 'Monitor and manage hot list alert notifications'. It features three summary cards: '6 TOTAL HOT LIST ALERTS', '6 UNREVIEWED', and '0 REVIEWED'. Below these are filters for 'Review Status' (All Status), 'From Date' (mm/dd/yyyy), 'To Date' (mm/dd/yyyy), and a search bar. A table below shows 6 hot list alerts found, with columns for Alert Time, Driver, Credential Read, Access, Review Status, and Actions. The table data is as follows:

| ALERT TIME         | DRIVER          | CREDENTIAL READ | ACCESS  | REVIEW STATUS | ACTIONS |
|--------------------|-----------------|-----------------|---------|---------------|---------|
| 5/18/2028 05:34 PM | John Smith      | ABC1234         | Scanned | UNREVIEWED    | 🔍 ✓     |
| 5/18/2028 05:15 PM | John Smith      | ABC1234         | Scanned | UNREVIEWED    | 🔍 ✓     |
| 5/18/2028 05:15 PM | John Smith      | ABC1234         | Scanned | UNREVIEWED    | 🔍 ✓     |
| 4/30/2028 04:44 PM | Charlie Cheeath | 3               | Denied  | UNREVIEWED    | 🔍 ✓     |
| 4/30/2028 04:44 PM | Billy Bobcat    | 2               | Scanned | UNREVIEWED    | 🔍 ✓     |
| 4/30/2028          |                 |                 |         |               |         |

### Analytics & BI

Operational dashboards and real-time performance insights.

### Reports

Company, Vehicle, Dwell, Event, and Credential reporting.

### Dispatching

Real-time curbside coordination and transportation flow management.

### Fuzzy Matching

Intelligent identity resolution for vehicles, credentials, and operational events.

### Redundancy

High-availability architecture with resilient operational continuity.

*\*CogniTrack is powered by @ArmID, Inc. and used under license. Any unauthorized use, copy, reproduction, or distribution of this software is strictly prohibited\**

# CogniTrack

Real-Time Visibility. Intelligent Enforcement. Optimized Flow.

## Enterprise Deployment & Edge Integration

This aligns perfectly with:

- on-prem architecture
- RFID + LPR support
- operational infrastructure
- GTMS environments

## Core Deployment Advantages

### On-Prem Deployment

- Full operational control
- Secure local infrastructure
- Low-latency processing
- High availability architecture
- Enterprise-ready scalability

## RFID & LPR Edge Device Support

- Native RFID integration
- Real-time LPR processing
- Edge-based operational intelligence
- Vehicle identity resolution
- Multi-device event correlation

## Real Time Operational Awareness

- Live curbside monitoring
- Dispatch coordination
- Compliance enforcement
- Operational alerts
- Transportation flow intelligence



Smart-LPR



CT-45



Long Range RFID: LR-Series



Long Range RFID: XT-Series

*\*CogniTrack is powered by ©ArmID, Inc. and used under license. Any unauthorized use, copy, reproduction, or distribution of this software is strictly prohibited\**