

CogniTrack

Policy-Driven Operational Platform

Powered by TagMaster North America

CogniTrack is an enterprise-grade Ground Transportation management System (GTMS) designed to provide airports, transportation authorities, and fleet operators with real time operational visibility, policy enforcement, traffic flow intelligence, and revenue optimization across curbside and staging operations.

The Airport Ground Transportation Challenge

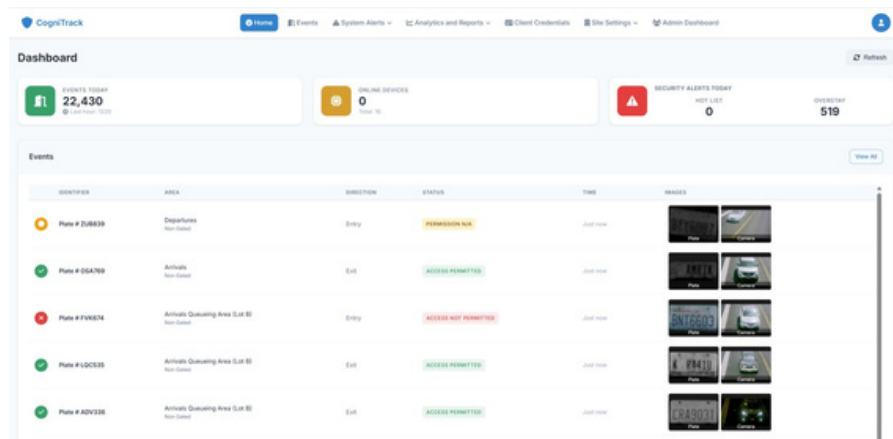
Modern airport curbside and fleet operations face increasing pressure from:

- Curbside congestion and vehicle dwell violations
- Fragmented operational visibility across systems
- Manual enforcement workflows
- Inefficient dispatch coordination
- Compliance monitoring complexity
- Revenue leakage from unauthorized activity

Airports require a centralized operational platform capable of monitoring, correlating, and managing real-time transportation activity across curbside, staging, dispatch, and enforcement environments.

Why CogniTrack?

- Purpose-Built for Airport GTMS
- Operations Real-Time Operational Intelligence
- Open Multi-Sensor Architecture Policy-Driven Automation
- Enterprise On-Prem Deployment
- Analytics & Revenue Protection



CogniTrack is powered by ©ArmID, Inc. and used under license. Any unauthorized use, copy, reproduction, or distribution of this software is strictly prohibited

CogniTrack

Policy-Driven Operational Platform

Core Platform Capabilities

- **Live Events, Flow Monitoring & Vehicle Identity Resolution**
 - Real-Time Operational & Security Event Monitoring
 - License Plate Recognition (LPR)
 - RFID Vehicle Identification
 - Multi-Sensor Identity Resolution
 - Multi-Device Support
 - Wiegand Compatibility
 - Device, Occupancy & Peak-Time Monitoring
 - Redundancy
 - Fuzzy Matching
- **Reports**
 - Built-In Reports
 - Dwell
 - Event
 - Custom Reports
 - Configurable Operational Reports
 - Data Exporting
 - Historical Event Analysis
- **System Alerts & Operational Awareness**
 - Hot List
 - Overstay
 - Dispatching
 - Compliance
 - Real Time Health & Anomaly Detections
- **Dispatch & Flow Management**
 - Dispatch Coordination
 - Queue Management
 - Staging Lot Operations
 - Curbside Management
 - Peak Traffic Coordination
 - Vehicle Movement Management
- **Compliance & Enforcement**
 - Policy Enforcement Automation
 - Dwell-Time Enforcement
 - Unauthorized Access
 - Enforcement Operational
 - Compliance Monitoring
 - Audit Trail Visibility
 - Historical Event Logging



CogniTrack is powered by ©ArmID, Inc. and used under license. Any unauthorized use, copy, reproduction, or distribution of this software is strictly prohibited